

Mother–Infant Wristbands

L&D and NICU departments face the daily challenge of caring for the most valuable and fragile patients. To ensure that every newborn is properly identified and matched to their mother, hospitals place their trust in PDC Healthcare’s line of Mother–Infant Identification Wristbands.

Wristbands are available in two–part, three–part, and four–part designs. Choose from Insert Style (with protective pockets for insert cards) or Imprinter Style (for printing and writing directly on the wristband). Wristbands feature smooth, soft material, which is comfortable and safe for sensitive skin. They can be ordered with the following closure options: non–transferable SecurSnap®, adhesive, or readjustable.

Precision® Neonatal Wristbands meet the needs of patients in the Labor & Delivery and NICU Departments. PDC Healthcare’s new Bundle of Joy™ Wristbands proudly show family members’ relation to their newest addition.

Mother–Infant Wristbands provide medical–grade quality for maximum durability, safety, and security.

Mother–Infant Wristbands help healthcare organizations meet applicable patient safety regulatory guidelines, including:

- **The Joint Commission National Patient Safety Goals:** Identify Patients Correctly, Improve Staff Communication, Use Medicines Safely, Prevent Infection, Identify Patient Safety Risks, and Prevent Mistakes in Surgery.
- **Health Insurance Portability and Accountability Act (HIPAA):** to protect patients’ medical records and other health information.
- **American Health Association (AHA):** to prevent the chance of lost or transferred data.
- **Five Rights of Patient Safety:** to ensure right patient, medication, dose, time, and method.



Table of Contents

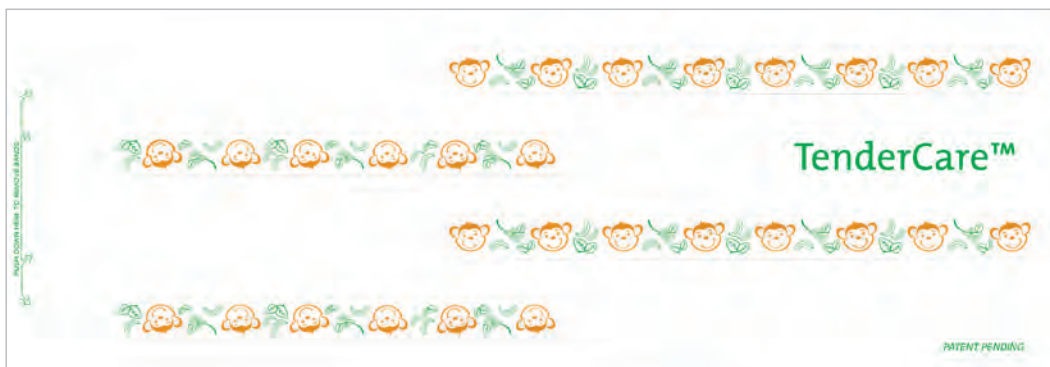
Newborn ID Systems.....	44
Neonatal Wristbands.....	48
Specialty Pediatric Wristbands.....	49

MOTHER-INFANT WRISTBANDS

NEWBORN ID SYSTEMS

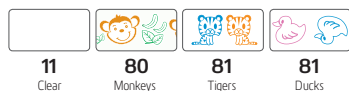
TenderCare™ Thermal Newborn ID System

- Exclusive, patent-pending 4-part wristband system positively identifies baby with mother and father or designated family member
- Patented PermaPrint® surface provides best imprint quality, maximum resistance to solvents, and seamless printing
- Provides fast, accurate, on-demand printing with a thermal printer
- Supports text, linear and 2D bar codes, photo ID and graphics
- Helps increase lifespan of print head
- Ensures crisp, clear bar codes for easy scannability
- Ultra-soft material for delicate newborn skin
- Tamper-resistant adhesive closure
- Offered in plain white, plus a variety of cute, baby-friendly designs
- Available in 2-part & 4-part styles



Product Number	Size of Wristbands	Core Size	Information Area	Sets/Box
4 Part: 7744-**-PDL		1"	3 1/4" L x 1" H (Adult) 2" L x 7/8" H (Infant)	400/BX (2 rolls of 200)
4 Part: 7744-**-PDO				240/BX (2 rolls of 120)
4 Part: 7745-**-PDL	11" (2 Adult) 8" (2 Infant)	1.5"		400/BX (2 rolls of 200)
4 Part: 7745-**-PDO				240/BX (2 rolls of 120)
4 Part: 7746-**-PDK		3"		300/BX (2 rolls of 150)

Substitute ** for numbered color:



First and only
Thermal 4-part Newborn
Wristband Solution!

TenderCare™ Thermal Mother-Child Wristbands



Product Number	Size of Wristbands	Core Size	Information Area	Sets/Box
2 Part: 7750-**-PDO	11" (2 Adult) 8" (2 Infant)	1"	3 1/4" L x 1" H (Adult) 2" L x 7/8" H (Infant)	120 SETS-2RLS/BX
2 Part: 7751-**-PDO		1.5"		

Substitute ** for numbered color:



SnugFit® Wristbands

- Soft vinyl material with no rough edges
- Closure is re-adjustable to size needed
- Available in Imprinter & Insert styles (Insert cards included)
- Serialized with alphanumeric characters
- Custom imprinting available upon request

Precision® Bar Code Tags

SnugFit® Wristbands can be used with Precision® Bar Code Tags which are designed for use with a Direct Thermal printer, providing crisp clear bar codes. (See page 13.)



Alphanumeric serialization

Product Number	Size of Wristbands	Wristband Style	Information Area	Sets/Box
4 Part: 344-**-PDL	11" L (2 Adult) 7 1/2" L (2 Infant)	Insert	2 1/4" L x 1" H (Adult) 1 1/4" L x 1/2" H (Infant)	100 (sets of 4)
3 Part: 340-**-PDK	11" L (1 Adult) 7 1/2" L (2 Infant)	Insert		100 (sets of 3)
4 Part: 344S-**-PDL	11" L (2 Adult) 7 1/2" L (2 Infant)	Imprinter		100 (sets of 4)
3 Part: 340S-**-PDK	11" L (1 Adult) 7 1/2" L (2 Infant)	Imprinter		100 (sets of 3)

Substitute ** for numbered color:



Soft-Lock® Wristbands

- Soft vinyl material with no rough edges
- Adhesive closure
- Available in Imprinter & Insert styles
- Serialized with numeric characters
- Custom imprinting available upon request



Numeric serialization

Product Number	Size of Wristbands	Wristband Style	Information Area	Sets/Box
4 Part: 684-**-PDL	11" L (2 Adult) 8 1/4" L (2 Infant)	Insert	2 3/4" L x 7/8" H (Adult) 2 5/8" L x 3/8" H (Infant)	100 (sets of 4)
4 Part: 685-**-PDL	11" L (2 Adult) 8 1/4" L (2 Infant)	Imprinter	3" L x 1" H (Adult) 2 5/8" L x 1/2" H (Infant)	

Substitute ** for numbered color:



ALL WRISTBANDS ARE LATEX-FREE.

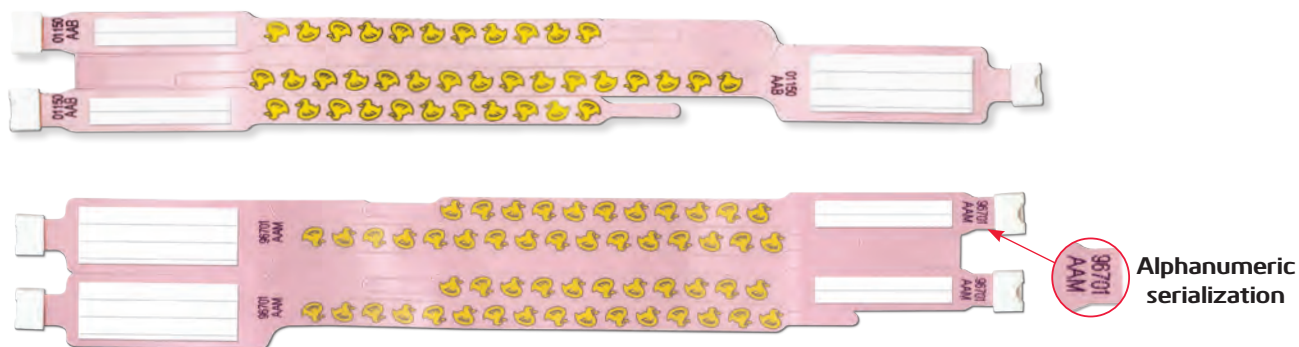
MOTHER-INFANT WRISTBANDS

NEWBORN ID SYSTEMS

Conf-ID-ent™ Wristbands

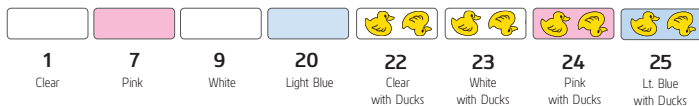
- Readjustable closure ensures a perfect fit
- Alphanumeric serialization for positive patient identification
- Soft vinyl material with no rough edges
- Available in a 3 or 4 part set
- Insert cards included with insert wristbands
- Pen included with imprinter wristbands
- Companion labels, which are designed for wristbands are sold separately

Insert



Product Number	Size of Wristbands	Information Area	Sets/Box
3 Part: WBMFBRC3-**	11" (1 Adult) 8-1/2" (2 Infant)	2-1/4" L x 1" H (Adult) 2-1/4"L x 1/2"H (Infant)	100 sets of 3 Bands
4 Part: WBMFBRC4**	11" (2 Adult) 8-1/2" (2 Infant)	2-1/4" L x 1" H (Adult) 2-1/4"L x 1/2"H (Infant)	100 sets of 4 Bands

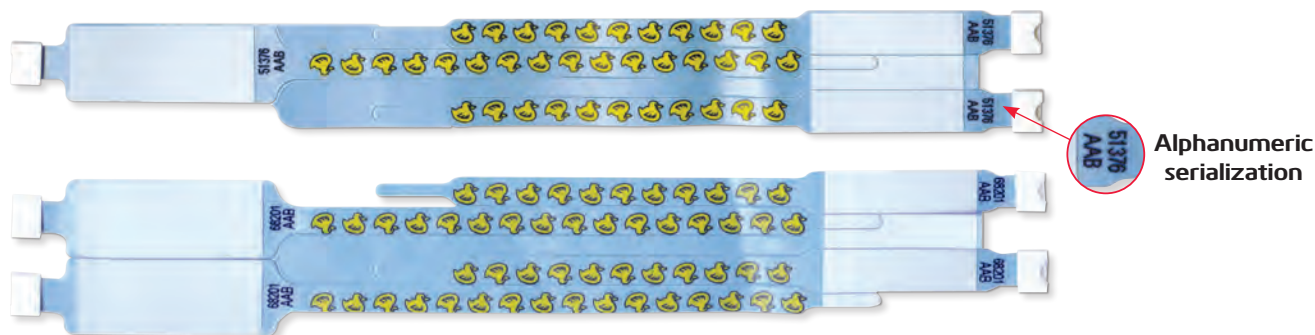
Substitute ** for numbered color:



Companion Labels

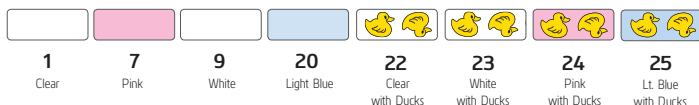
Product Number	1" Core Direct Thermal	1.5" Core Direct Thermal	1.5" Core Direct Thermal
WBLBL2	WBLBDT2	WBLBDT2	WBLBDT1

Imprinter



Product Number	Size of Wristbands	Information Area	Sets/Box
3 Part: WBMFBRE3-**	11" (1 Adult) 8-1/2" (2 Infant)	2-1/4" L x 1" H (Adult) 2-1/4"L x 1/2"H (Infant)	100 sets of 3 Bands
4 Part: WBMFBRE4-**	11" (2 Adult) 8-1/2" (2 Infant)	2-1/4" L x 1" H (Adult) 2-1/4"L x 1/2"H (Infant)	100 sets of 4 Bands

Substitute ** for numbered color:



Companion Labels

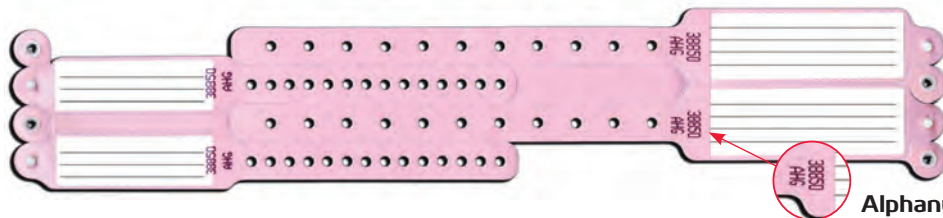
Product Number	1" Core Direct Thermal	1.5" Core Direct Thermal	1.5" Core Direct Thermal
WBLBL3	WBLBDT5 WBLBDT19	WBLBDT6	WBLBDT4

MOTHER-INFANT WRISTBANDS

NEWBORN ID SYSTEMS

Veri-Color® Wristbands

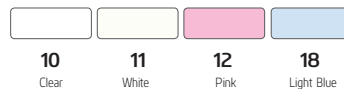
- Soft vinyl material with no rough edges
- Patented SecurSnap® closure provides maximum security
- Available in 2, 3 or 4 part
- Serialized with alphanumeric characters
- Custom imprinting available upon request



Alphanumeric serialization

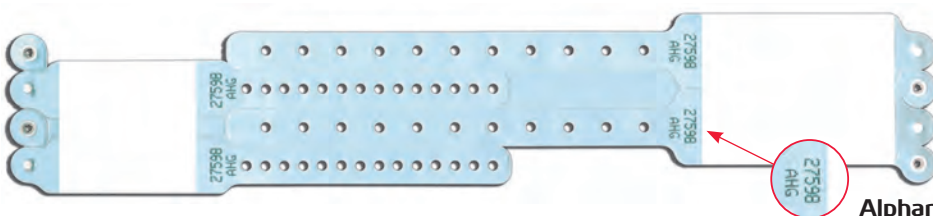
Product Number	Size of Wristbands	Wristband Style	Information Area	Sets/Box
4 Part: 324-**-PDL	9 1/4" L (2 Adult), 6 1/2" L (2 Infant)	Insert	2 1/2" L x 7/8" H (Adult) 2" L x 5/8" H (Infant)	100 (sets of 4)
3 Part: 320-**-PDK	9 1/4" L (1 Adult), 6 1/2" L (2 Infant)			100 (sets of 3)
2 Part: 220-**-PDK	9 1/4" L (1 Adult), 6 1/2" L (1 Infant)			150 (sets of 2)

Substitute ** for numbered color:



Speedi-Print® Wristbands

- Soft vinyl material with no rough edges
- Patented SecurSnap® closure provides maximum security
- Available in 2, 3 or 4 part
- Serialized with alphanumeric characters
- Custom imprinting available upon request



Alphanumeric serialization

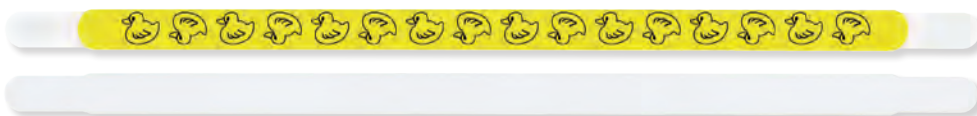
Product Number	Size of Wristbands	Wristband Style	Information Area	Sets/Box
4 Part: 324S-**-PDL	9 1/4" L (2 Adult), 6 1/2" L (2 Infant)	Imprinter	2 1/2" L x 1" H (Adult) 1 3/4" L x 3/4" H (Infant)	100 (sets of 4)
3 Part: 320S-**-PDK	9 1/4" L (1 Adult), 6 1/2" L (2 Infant)			100 (sets of 3)
2 Part: 220S-**-PDK	9 1/4" L (1 Adult), 6 1/2" L (1 Infant)			150 (sets of 2)

Substitute ** for numbered color:



Our new TenderCare™ Infant Tether keeps newborn patients from being disturbed!

Simply place the tether and bar code tag to the outside allowing bar code scanning without disturbing the patient.



Product Number	Description	Size of Wristband	Wristbands/Box
7780-82-PDG	Ducks	12.5" L x 45" W	100
7780-11-PDG	White		



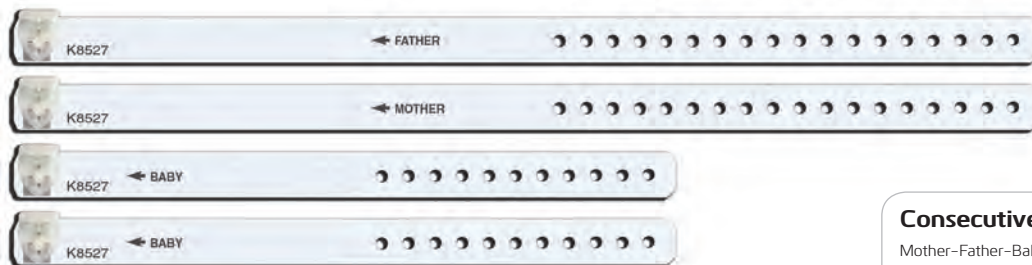
ALL WRISTBANDS ARE LATEX-FREE.

MOTHER-INFANT WRISTBANDS

NEWBORN ID SYSTEMS

Ident-A-Band®

- Soft, tubular vinyl material
- Heart shaped plastic snap
- Large, highly visible numbers
- Colored backing on inserts highlights serial number on bands
- Only available as custom
- Insert cards are included
- Additional insert cards can be ordered (See page 42.)



Available in Clear ONLY

Product Number	Size of Wristbands	Wristband Style	Configuration	Information Area	Sets/Box
4 Part: 6734-10-PDO-SI	9-1/4" L (2 Adult) 6" L (2 Infant)	Insert	2 Adult, 2 Infant	3-1/4" L x 3/8" H (Adult) 1-5/8" L x 3/8" H (Infant)	150 (sets of 4)
3 Part: 6733-10-PDO-SI	9-1/4" L (1 Adult) 6" L (2 Infant)		1 Adult, 2 Infant		200 (sets of 3)
2 Part: 6732-10-PDL-SI	9-1/4" L (1 Adult) 6" L (1 Infant)		1 Adult, 1 Infant		200 (sets of 2)

Consecutive Numbering

Mother-Father-Baby (OB) Bands

Consecutive numbering is available in seven formats below. All bands within each set are imprinted with identical numbers. Numbers must appear next to the clip seal.

1. Four digits (0001 to 9999)*
2. Five digits (00001 to 99999)*
3. Six digits (000001 to 999999)*
4. Alpha followed by five digits (A00001 to Z99999)
5. Digit, alpha, four digits (0A0001 to 9Z9999)
6. Double alpha followed by four digits (AA0001 to ZZ9999)
7. Single alpha followed by four digits (A0001 to Z9999)

*The leading zeros can be suppressed if desired.

Precision® Neonatal Wristbands

The Precision® Neonatal Wristband helps meet the special needs of patients in the Labor & Delivery and NICU Departments. Available in two sizes, this movable ID band offers newborns and preemies the highest quality, convenience, and comfort.

- Constructed of soft, comfortable foam
- Secures with hook & loop Velcro® style closure
- No cutting necessary
- Blank ID panel accepts handwritten information or label (up to 2-5/8"
- Easily repositioned on wrist or ankle to accommodate IV site changes
- Ensures ID band is present on limb instead of taped to incubator, guaranteeing positive patient identification



Product Number	524-11-PDD	534-11-PDD
Wristband Style	Write-On	Write-On
Length of Wristband	6-1/4" L	6-1/45" L
Information Area	2-5/8" L x 1" W	2-5/8" L x 1" W
Wristbands/Box	12	12

Conf-ID-ent™ Ball Point Pen

- Alcohol & water-resistant
- Black ink

Product Number	Qty.
WBBPPD-22	10/PK



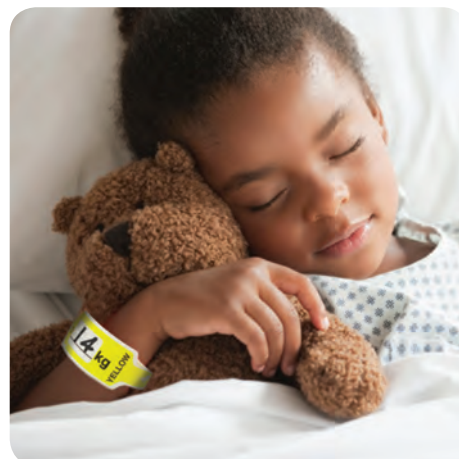
PEDIATRIC WRISTBANDS

SPECIALTY PEDIATRIC WRISTBANDS

KangaBand® Wristbands for use with Broselow® System

The Broselow® System is an easy-to-use, color-coded information and reference kit that provides doctors and nurses with the proper equipment sizes, pre-calculated medication dosages, and infusion rates needed to perform resuscitation on a child according to weight.

- Available in 9 colors that coordinate with the Broselow® System
- Write-on style wristbands feature a designated area to write in patient's weight (in Kg)
- Color-coded for quick, visual identification. Color name is also spelled out for additional reinforcement
- One size fits all. Fully adjustable
- Playful kangaroo design for pediatric patients
- Features patented SecurSnap®, tamperproof closure for added security



Product Number	Size of Wristband	Color	Kg Range	Wristbands/Box
KG470SGY-11-PDJ	10-1/4" L	Gray	3-5 kg	250
KG470SPK-11-PDJ		Pink	6-7 kg	
KG470SRD-11-PDJ		Red	8-9 kg	
KG470SPU-11-PDJ		Purple	10-11 kg	
KG470SYL-11-PDJ		Yellow	12-14 kg	

Product Number	Size of Wristband	Color	Kg Range	Wristbands/Box
KG470SWH-11-PDJ	10-1/4" L	White	15-18 kg	250
KG470SBL-11-PDJ		Blue	19-23 kg	
KG470SOR-11-PDJ		Orange	24-29 kg	
KG470SGR-11-PDJ		Green	30-36 kg	
KG470SML-11-PDJ		Multi Pack	—	

Bundle of Joy™ Wristbands

- Available in several playful designs that proudly show the relationship to the newest family member
- Features patented SecurSnap® tamperproof closure

One size fits all.
Fully adjustable



BSS400S-11-PDJ



BSF400S-11-PDJ



BBB400S-11-PDJ



BBA400S-11-PDJ



GMC400S-11-PDJ



GPB400S-11-PDJ



AUB400S-11-PDJ



UNA400S-11-PDJ

Size of Wristband	Wristbands/Box
10"L	250

Product Number	Description	Size of Wristband	Wristbands/Box
BJ400S ML-11-PDJ	Multi Pack	10"L	250

ALL WRISTBANDS ARE LATEX-FREE.

MOTHER-INFANT BANDS